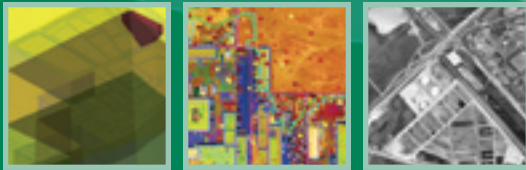


Project Navigator, Ltd.

www.projectnavigator.com



STRATEGIES INTO TACTICAL ACTION

Project Navigator, Ltd. is a knowledge, risk and resource management company. Since our inception in 1997, our project managers, engineers and scientists have developed a strong track record for creative problem solving. Our primary service is controlling the strategic direction of demanding projects.

Each project is managed to optimize our clients' interests and save money. Execution strategy is developed with seamless communication with the client.

A cornerstone of our project management approach is the use of Geographical Information System (GIS) techniques for the interpretation and analysis of project data and information. We are known for generating vivid, high quality, understandable graphics to analyze and describe complex problems.

Our GIS techniques are complemented through extensive use of the internet for transferring project information, conducting online meetings, streaming project animations to clients, and hosting onsite web cams. We have designed and currently operate **www.projecttoolbox.com** which is an "always on", web-enabled, project management tool. Projecttoolbox was specifically designed for online bidding and procurement, and for providing a secure project database repository for "client-only" access. This tool translates to better execution efficiency and thereby project cost savings.

Project Navigator, Ltd. is in a growth strategy of serving clients who are pursuing high-risk international projects that require the assistance of a strong, creative, project management organization. This work is being augmented through business relationships.

For more information:

Los Angeles 714.388.1800
Houston 713.468.5004

Superfund Site Project Management Services

- Strategic, client-oriented management
- Global project strategy development
- Document and data management
- Federal, State and Local agency negotiations
- Relationships and community interaction
- ROD negotiations, including ESDs and Amendments
- Remedy alternatives analyses
- Project cost and schedule analysis
- Risk-benefit analysis
- Uncertainty analysis
- Project risk management
- Value engineering assessments
- Innovative remedies
- Bidding
- Work plan formulation
- Design oversight
- Construction management
- Brownfields experience
- Liability intelligence gathering
- PRP search assistance
- GIS and project/remedy visualization graphics
- Litigation support
- Cost recovery support

Current High Profile Superfund Sites for Project Navigator

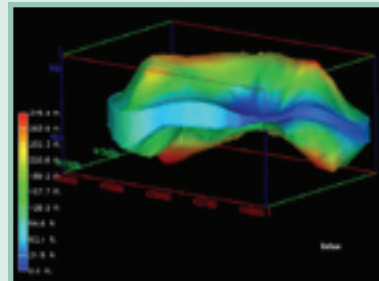
- Operating Industries Inc. (OII), Monterey Park, CA
- Waste Disposal Inc. (WDI), Santa Fe Springs, CA
- PAB Oil and Chemical, Abbeville, LA
- Tex Tin, Texas City, TX



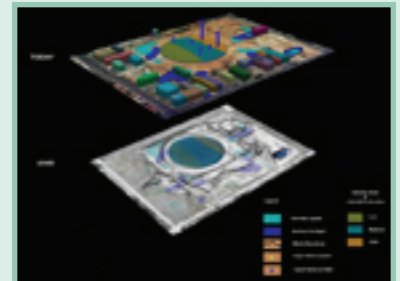
Ascon Landfill State Superfund Site



OII Superfund Site



MSW at OII



WDI Superfund Site