

## STRATEGIES INTO TACTICAL ACTION

**Project Navigator, Ltd.** is a knowledge, risk and resource management company. Since our inception in 1997, our project managers, engineers and scientists have developed a strong track record for creative problem solving. Our primary service is controlling the strategic direction of demanding projects.

Each project is managed to optimize our clients' interests and save money. Execution strategy is developed with seamless communication with the client.

A cornerstone of our project management approach is the use of Geographical Information System (GIS) techniques for the interpretation and analysis of project data and information. We are known for generating vivid, high quality, understandable graphics to analyze and describe complex problems.

Our GIS techniques are complemented through extensive use of the internet for transferring project information, conducting online meetings, streaming project animations to clients, and hosting onsite web cams. We have designed and currently operate **www.projecttoolbox.com** which is an "always on", web-enabled, project management tool. Projecttoolbox was specifically designed for online bidding and procurement, and for providing a secure project database repository for "client-only" access. This tool translates to better execution efficiency and thereby project cost savings.

**Project Navigator, Ltd.** is in a growth strategy of serving clients who are pursuing high-risk international projects that require the assistance of a strong, creative, project management organization. This work is being augmented through business relationships.

### For more information:

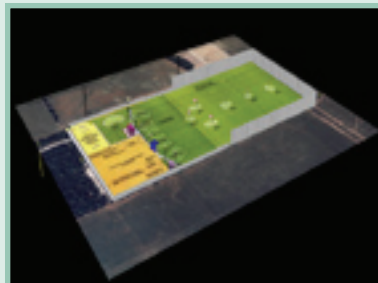
Los Angeles 714.388.1800  
Houston 713.468.5004

## Oil Field Project Management Services

- Remediation planning for oil fields
- Site closures under Louisiana Statewide Order No. 29-B and Federal programs
- Construction oversight
- Value engineering
- Site assessment
- Risk assessment
- Fate and transport analysis of oil field constituents (Na, Zn, O&G, etc.)
- Bidding and procurement management
- Contract formulation and management
- Online bidding at [www.projecttoolbox.com](http://www.projecttoolbox.com)
- Regulatory negotiations and strategy
- Project cost forecasting
- Project probabilistic analysis (Monte Carlo)
- Geographical Information System (GIS) data analysis
- Construction logistics planning via animation
- NORM assessments and consulting
- Expert witness
- Community relations
- Pipeline EIRs
- Spill response
- CERCLA
- Web enabled management ([www.projecttoolbox.com](http://www.projecttoolbox.com))



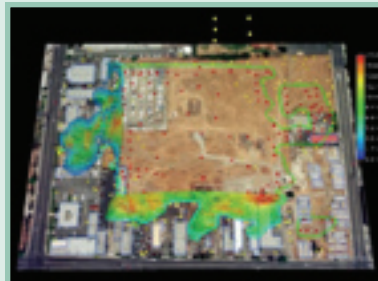
MAR Services Impacted Media



Possible PAB OU Improvements



MAR Services Aerial



WDI Waste Locations