

# Melody T. Cote, M. Eng.



**Melody T. Cote**

*Project Geologist/GIS Technician*

B.S. Geological Sciences, 2000,  
Cornell University, Ithaca, NY

M.Eng., Environmental Geophysics,  
2001, Cornell University, Ithaca,  
NY

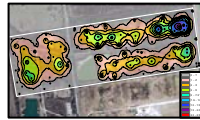
## Focused Experience

- Geographic Information System (GIS)
- Digital Image Processing
- Geodynamics
- Global Positioning System (GPS)
- Geodynamics
- Geophysical Field Methods
- Groundwater Analysis
- Remote Sensing
- Groundwater Analysis
- Remote Sensing
- Sedimentary Basins
- Soil Morphology
- Database
- Data mining
- Conceptual site modeling
- Site characterization
- 3D visualization
- Engineering support
- Litigation support
- Aerial photography analysis

## Skills

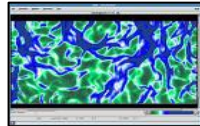
- Data management, analysis and display of geographic and environmental knowledge via Geographic Information System (GIS)
- Structural and stratigraphic mapping and interpretation
- 3D visualization of subsurface contaminated soils and groundwater plumes
- Development of hydraulic models
- Interpretation of seismic data for oil & gas
- Interpretation of ground-penetrating radar (GPR)
- Site conceptual modeling
- Site characterization
- Conversion, mining and analysis of large quantity of data
- Landfill gas and groundwater flow simulation
- Aerial photography analysis
- Knowledge management and database structuring
- Data entry and QA/QC process management
- Historical site condition visualization

## Representative Experience



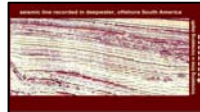
### Cox Road landfill

Developed a GIS database for the Cox Road Landfill project which consisted of over 40,000 points of data at multiple depths and within various environmental media. GIS mapping allowed for efficient project reporting, planning and design.



### Gulf of Mexico Appraisal Team

Structural and stratigraphic mapping and interpretation of deepwater Paleogene discovery. Managed and QC'd seismic data being re-processed by seismic vendor.



### Gulf of Mexico Geologic and Geophysical Evaluation Unit

Interpreted seismic data for oil & gas prospects. Integrated all subsurface data to determine reserves and fair market value.



### New Orleans Water Distribution System Assessment and Hydraulic Model

Worked in team to develop Water Master Plan for the city of New Orleans. Built GIS for distribution system, geocoded water consumption data, developed hydraulic model.



### New Orleans Sewer System Evaluation and Rehabilitation Program (SSERP)

Performed database development and management tasks with MS Access. Maintained GIS of New Orleans sewer system, geocoded work orders.

## Employment History

June 2007 to Present	Project Navigator, Ltd., Houston, TX Geologist/GIS Technician
2005 to 2007	Shell Oil Company, Houston, TX Geophysicist, Gulf of Mexico (GOM) Appraisal Team
2004 to 2005	Minerals Management Service, New Orleans, LA Geoscientist, Gulf of Mexico Geologic and Geophysical Evaluation Unit
2003 to 2004	MWH Americas, Inc., New Orleans, LA Environmental Scientist
2002 to 2003	Essential Environmental Engineering, Inc., New Orleans, LA Environmental Scientist